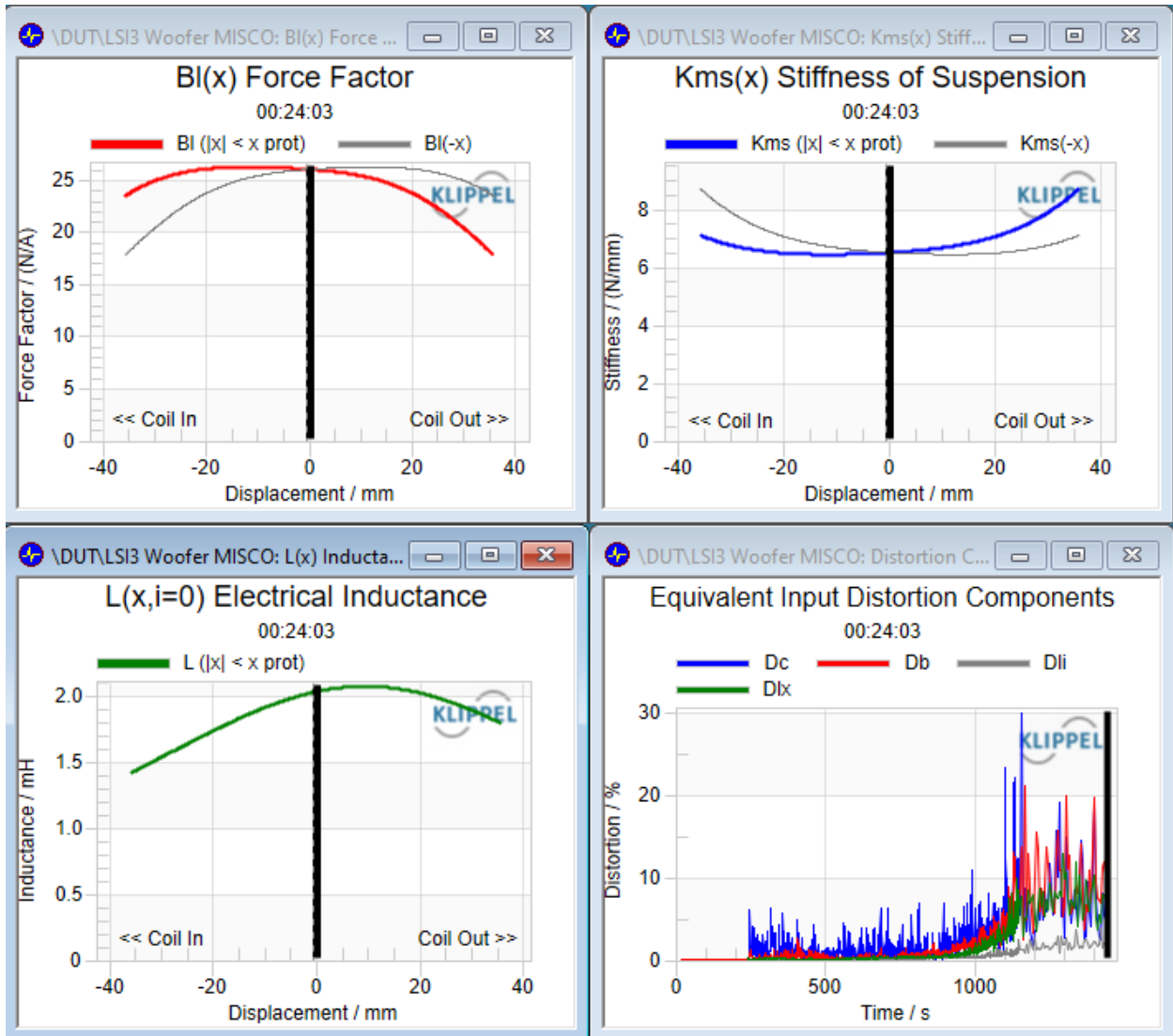


Stereo Integrity HS-24



T/S Parameters:

Re: 3.45 Ohms	Qms: 11.18
Le: 2.1 mH	Qes: 0.47
Fs: 15.6 Hz	Qts: 0.45
Mms: 982.9 g	Vas: 676.3 L
Cms: 1376.73	Xmax: 36 mm
BL: 26	Xsus: 69.9 mm